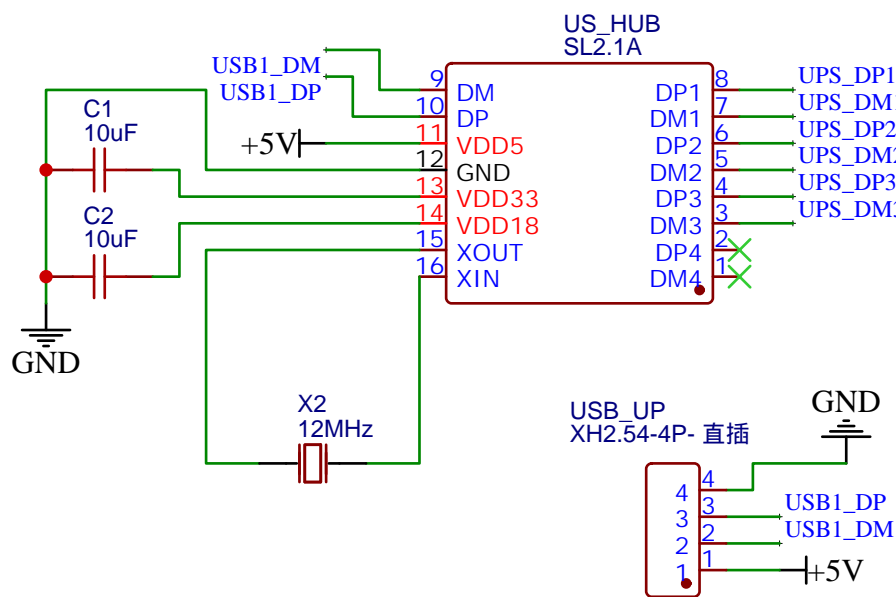
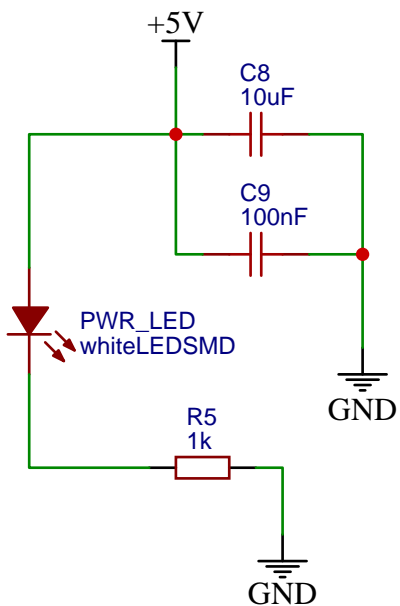


Upstream USB Port
The port connecting to the KVM control SBC (e.g. Orange Pi)

Power Ripple Filter

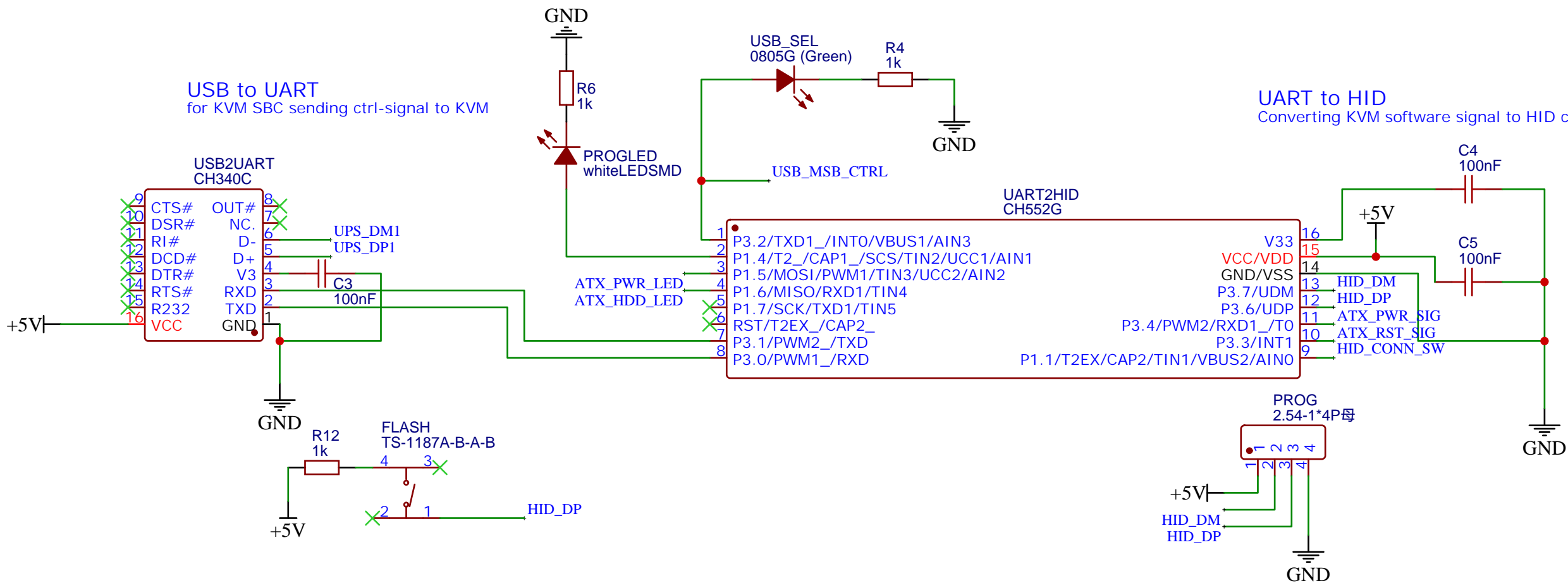


To USB2UART
To USB HDMI Captuer
To USB Mass Storage

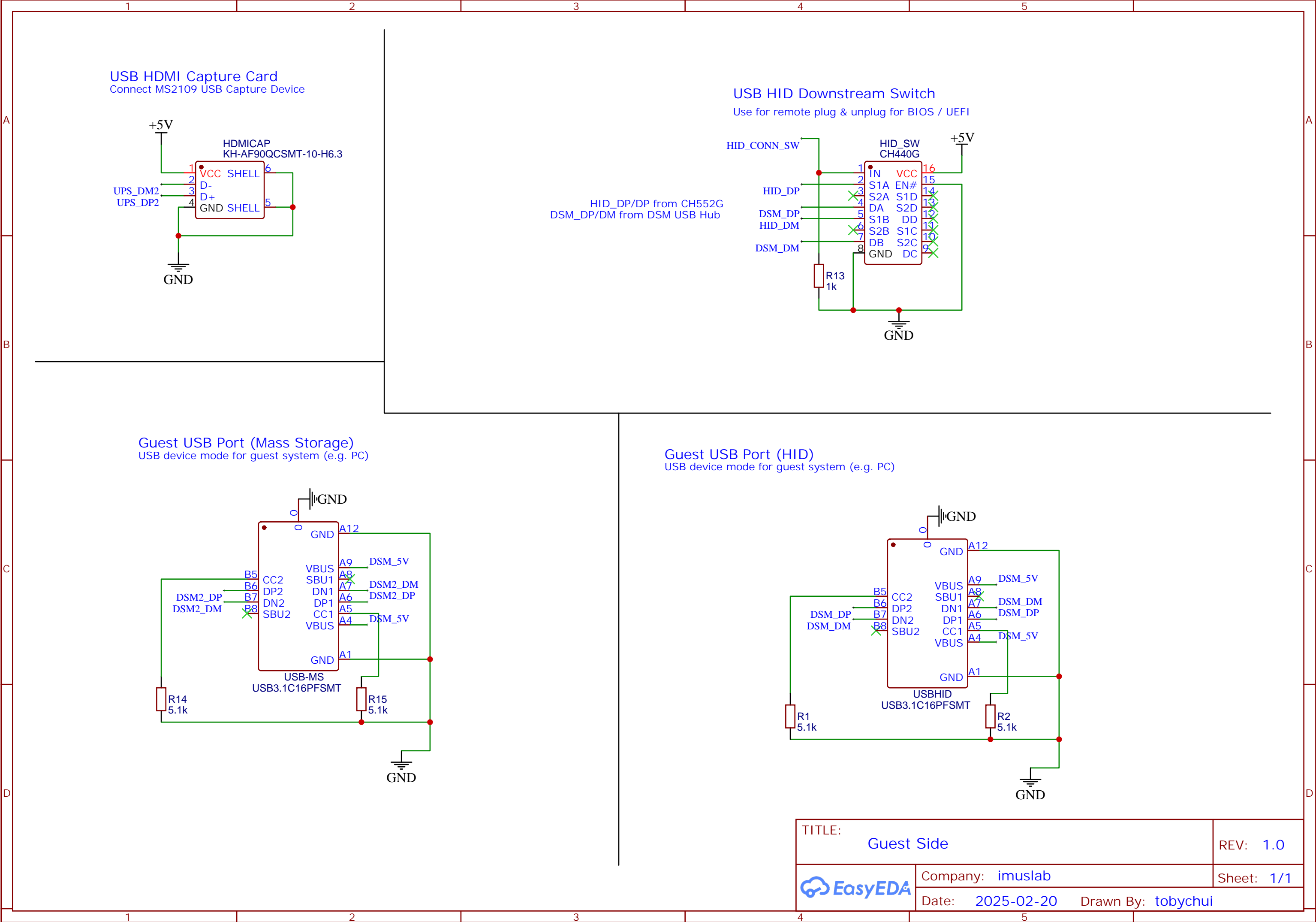


USB to UART
for KVM SBC sending ctrl-signal to KVM

UART to HID
Converting KVM software signal to HID commands

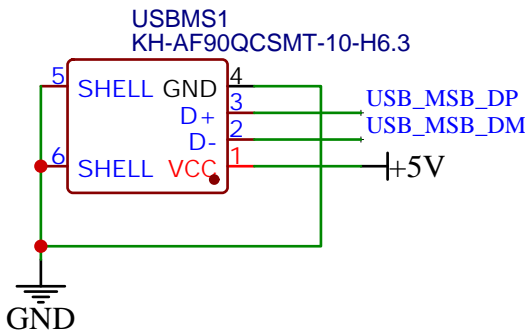


TITLE: KVM Hub		REV: 1.0
EasyEDA	Company: RemdesKVM	Sheet: 1/1
	Date: 2025-02-18	Drawn By: tobychui



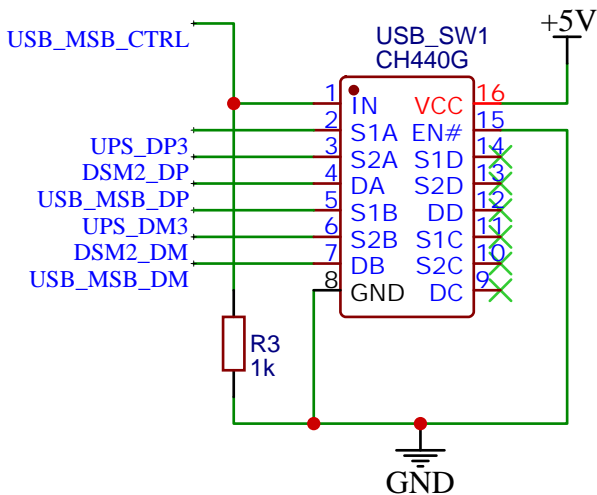
USB Mass Storage Port

For USB drive or other user required USB hardware



USB Mass Storage Switching Bus

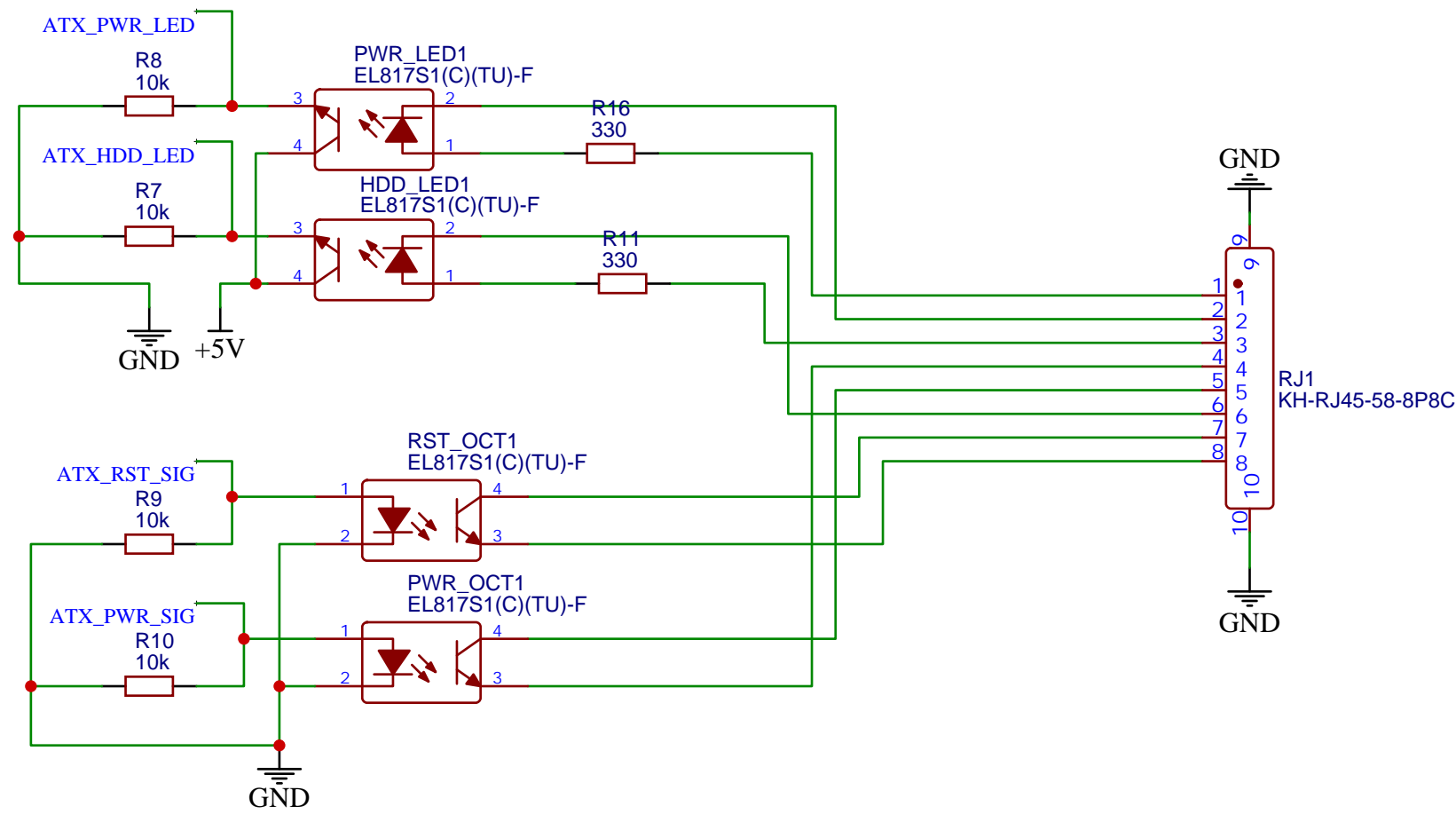
Default to upstream (KVM Host),
set IN to HIGH to switch over to downstream (computer being controlled)




ATX Power Control

Notes: ATX_PWR_LED and ATX_HDD_LED default to LOW, active HIGH

This design should be compatible with PiKVM ATX Board Pinsout (Not Tested)



TITLE: ATX Rev2		REV: 1.0
	Company: imuslab	Sheet: 1/1
	Date: 2025-04-20 Drawn By: tobychui	